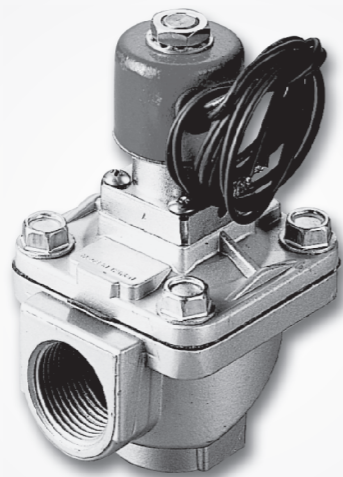


Features

- * Pulse type membrane valve.
- * Specially designed for fine dust collection with mass flow and long life.
- * Quick acting.
- * Safe and durable.
- * Aluminum body. Piping adaptor is available to offer.



Cautions

Humidity of fluid should stay in low status to avoid solidification damage when temperature is low.

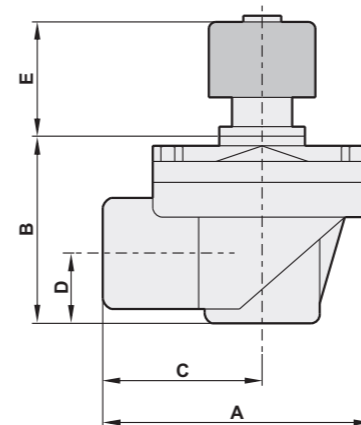
How to order

DC220	—	06	N	—	S	1	D
2/2 way Dust collector valve		Port size	Thread	Solenoid	Voltage	Coil type	
		06 3/4"	Blank PS		1 110VAC	Blank Lead wire	
		08 1"	N NPT		2 220VAC	D DIN	
		14 1-1/2"			9 24VDC		
		20 2"					
		24 2-1/2"					
		30 3"					

Specifications

Model	DC220					
Port size	3/4"	1"	1-1/2"	2"	2-1/2"	3"
CV value	11.2	18.5	43	60	120	130
Orifice	21mm	34mm	42mm	66mm	66mm	82mm
Body material	Aluminum alloy					
Operating pressure range	0.5 ~ 7.5 kgf/cm ²					
Ambient temperature	-20°C ~ 85°C					
Electrical pulse length	60 m/s					
Peak pressure	3.5 kgf/cm ²					
Total pulse length	80 m/s					
Open time	2.3 m/s					
Close time	20 m/s					
Volume per pulse	60 Ndm ³					
Duty cycle	100%					
Coil type	DIN or lead wire					
Protection class	IP65 (DIN 40 050)					
Insulation class	F					
Voltage tolerance	±10%					
Standard voltage	220VAC, 110VAC, 24VDC The other voltage are optional					

Dimensions



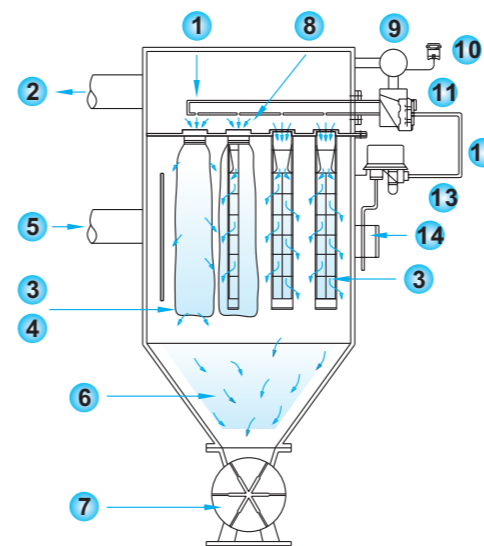
OPERATING THEORY

- * The diaphragm is lifted to open the valve when coil is energized.
- * The diaphragm is dropped to close the valve when coil is not energized.
- * Diaphragm is changeable, open the valve to change broken diaphragm into new one.

Unit : mm

Model	Port size	A	B	C	D	E
DC220-06	3/4"	78	65	43	22	65
DC220-08	1"	92	80	52	37	65
DC220-14	1-1/2"	130	90	73	32	65
DC220-20	2"	186	145	103	46	73
DC220-24	2-1/2"	186	145	103	46	73
DC220-30	3"	228	170	125	55	73

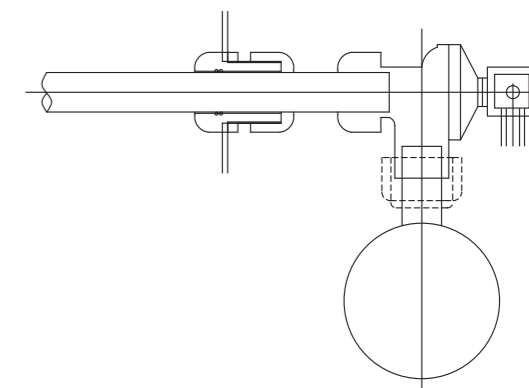
MATERIAL LIST



- | | |
|------------------------------------|---------------------------------------|
| 1. Compressed air jet | 8. Win's tube |
| 2. Clean air exhaust | 9. Air supply |
| 3. Filter housing | 10. Pressure switch |
| 4. Filter bag | 11. Diaphragm valve |
| 5. Dirty air intake | 12. (Auxiliary)air control pipe |
| 6. Dust collector hopper | 13. Magnetic valve |
| 7. Rotary material discharge valve | 14. Solid state sequential controller |

Mounting

There are four directions selection for wire plug magnetic valve, the connection outlet shall face downward.



Diaphragm valve data chart

