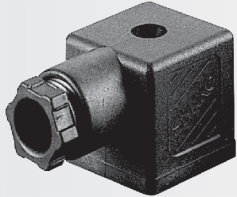


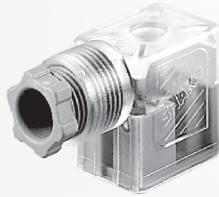
Order code

CODE: CN3018S9BSG



Order code

CODE:
AC : CN3018S9ASM
DC : CN3018S9DSM



Order code

CODE: CN3018SNBMM
1/2" NPTF conduit connector

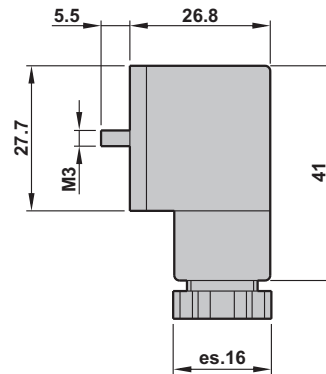
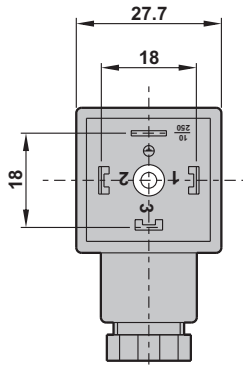


Specifications

Housing	Black and gray: PA+30% GF
Contact holder, Gland out	PA + 30% FV/ /PA 30% GF
Gland size	PG9 or 1/2"NPTF
Contact material	Cu Zn (AG)
Max. voltage	250VAC/300VDC
Max. current	16A
Operating current	10A
Spacing	18mm
Max. wire cross-section	1.5mm ²
Insulation class	C-VDE0110
Working temperature	-40°C ~+120°C

Dimensions

- **CN3018S9BSG**
- **CN301839ASM**
- **CN301839DSM**



- **CN3018SNBMM**

